

OLARTE MOURE

OLARTE MOURE & ASOCIADOS

Abogados - Attorneys

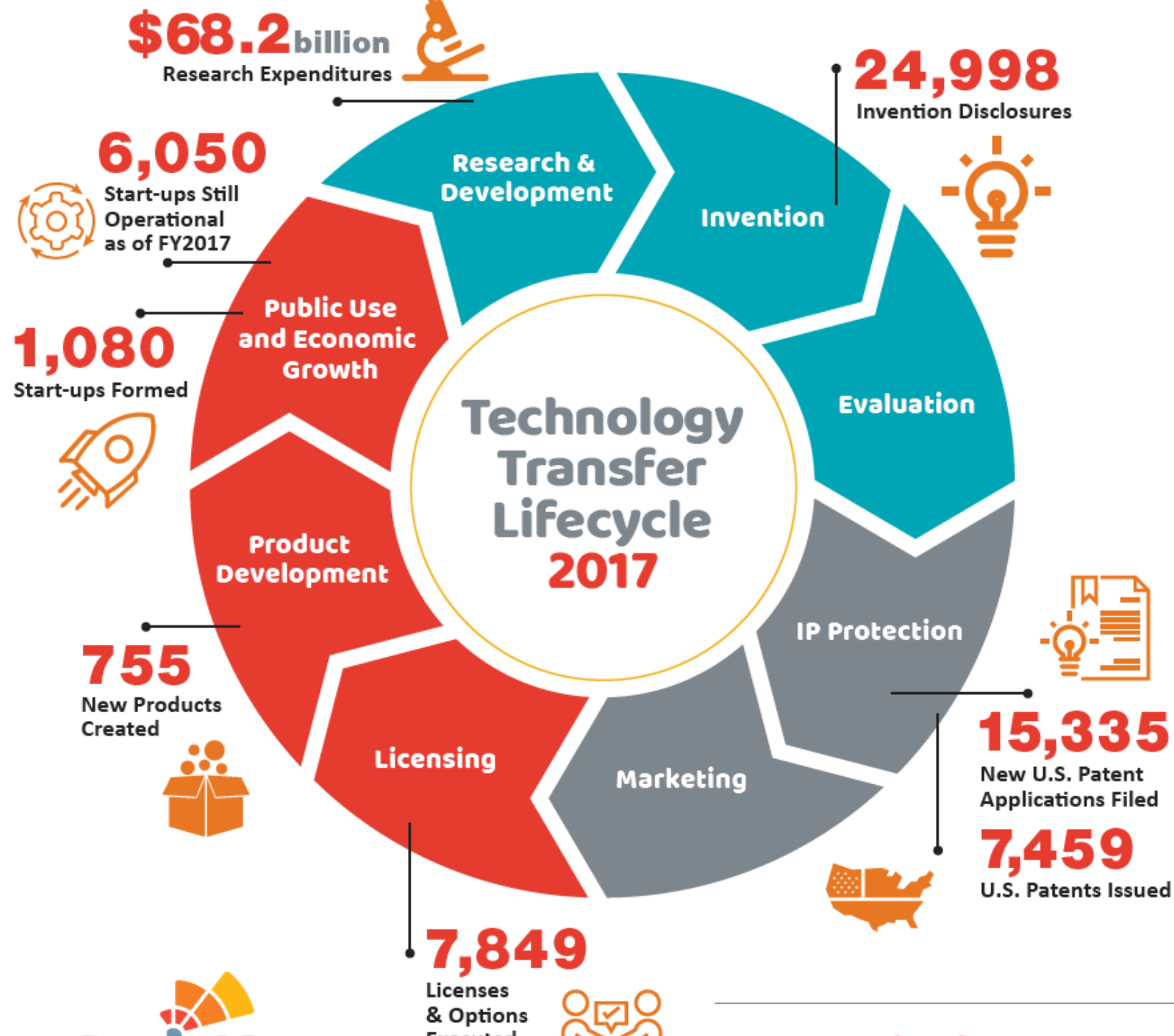
Carlos A. Parra
Socio/Director
Jefe Oficina de Tokio

**Usando IA y Blockchain
para venta y licenciamiento
de propiedad intelectual**

CUEES
Bucaramanga
2019







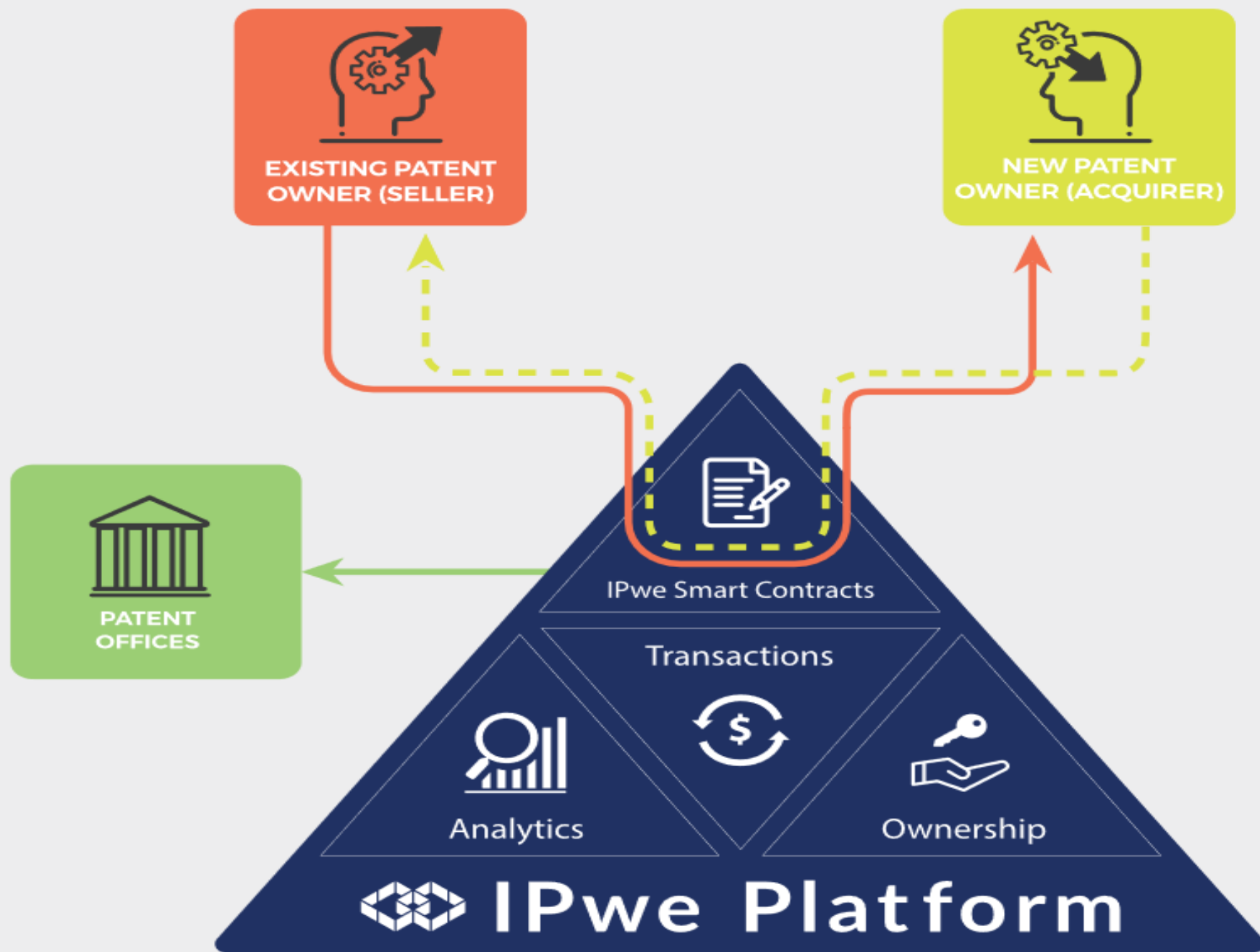
INTELIGENCIA ARTIFICIAL PARA TRANSACCIONES DE PI



BLOCKCHAIN PARA TRANSACCIONES DE PI



Why Blockchain Technology



TRANSACTION STEP

TODAY

IPWE

Identification of patents Seller desires to sell

Tends to be a “reactive” process and largely manual process based on changes in business and views on core and non-core patent assets

AI assisted process where you can become more proactive and stay on top of sale candidates with fewer resources

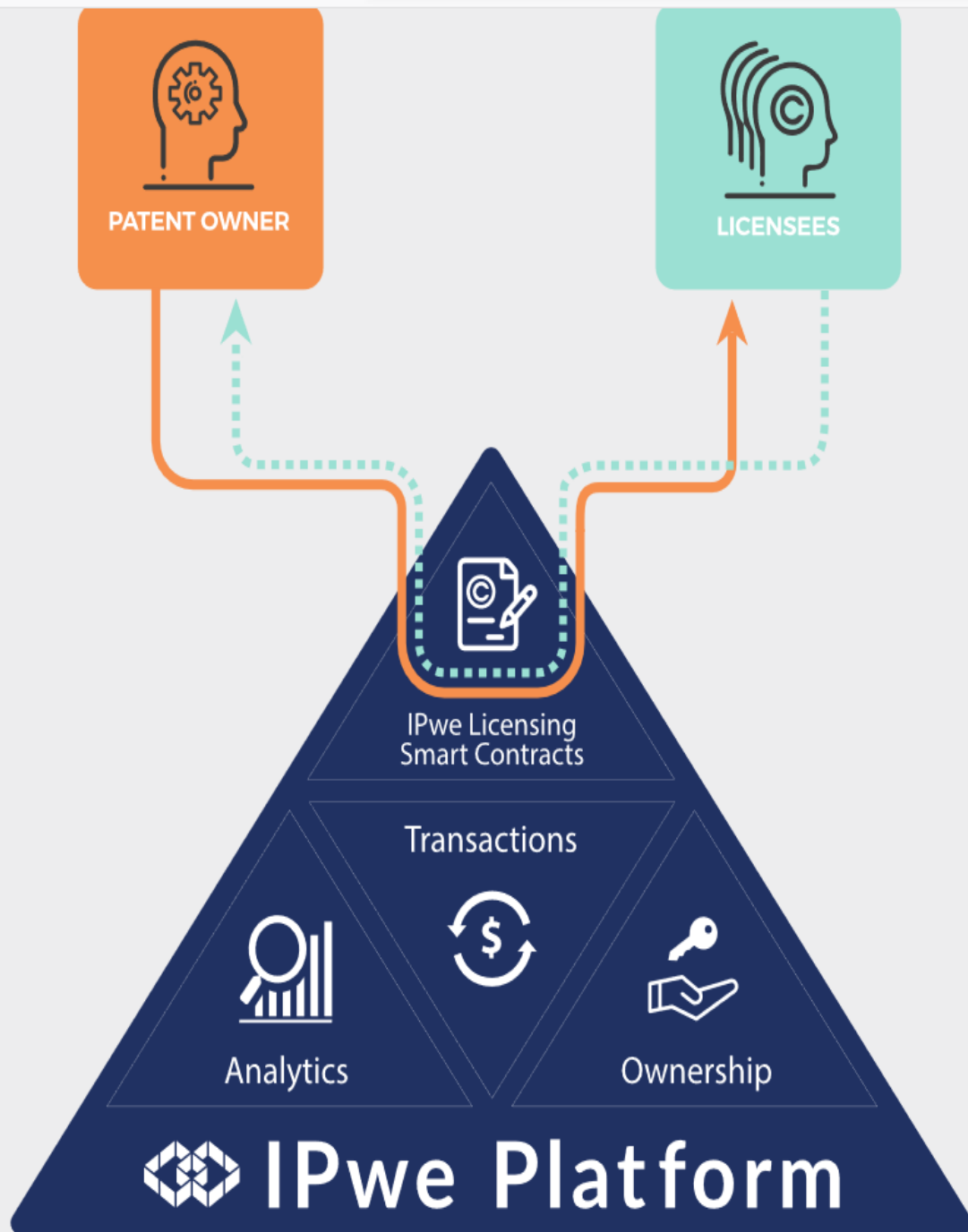
- AI assists in identification
- Summary information can be quickly assembled for all internal approvals

Identification of patents a Buyer may desire to acquire

Largely a manual process where the potential buyer must research and identify potential acquisition candidate

AI assisted process where you can quickly identify potential acquisition candidates and complete a high-level review of their attributes in a fraction of the time

- AI assists in identification
- Summary information on coverage, relevancy, validity and valuation is readily available



Patent Owner licenses **Licensees** under selected patents



Patent Owner collects payments / royalties from **Licensees**



Licensing Smart Contract governs:

- Automatic execution, including payment
- Identification of patents
- Terms of License
- Whether any terms are made public or not



IPwe Platform provides:

- Analysis
- Future tokenization opportunity
- IPwe Smart Contracts
- Reporting
- Royalty administration
- Transactional support

TRANSACTION STEP

TODAY

IPWE

Identification of patents Licensor desires to License

Tends to be a “reactive” process and largely manual process based on changes in business and views on core and non-core patent assets

AI assisted process where you can become more proactive and stay on top of candidates to be licensed with fewer resources

- AI assists in identification
- Summary information can be quickly assembled for all internal approvals

Identification of patents a Licensee may desire to obtain a license under

Largely a manual process where the potential Licensee must research and identify potential licensing candidates or individually assess patents being asserted

AI assisted process where you can quickly identify potential licensing candidates and complete a high-level review of their attributes in a fraction of the time

- AI assists in identification
- Summary information on coverage, relevancy, validity and valuation is readily available

Contract preparation	A manual process	IPwe provides the ability to use both standard agreements and a licensor's preferred forms
Payment Processing	Parties have to organize invoicing and order a wire payment and check its proper execution	IPwe Platform invoices, processes payment and automates patent assignment upon payment receipt
Royalty Management	A manual or outsourced process	IPwe automatically tracks reporting obligations and processes royalty reports and payment
Contract Compliance	Contract includes only non-selfexecuting provisions	Automated tracking of payments and execution of what the contract commands pursuant to smart contracts
Contract Management	Contract Management	IPwe provides parties with a life-long secure contract repository

MUCHAS GRACIAS


OLARTE MOURE

OLARTE MOURE & ASOCIADOS

Abogados - Attorneys

Oficina Bogotá • Oficina Medellín • Oficina Barranquilla • Oficina Bucaramanga • Oficina Japón

 www.olartemoure.com

 E - Mail: office@olartemoure.com